

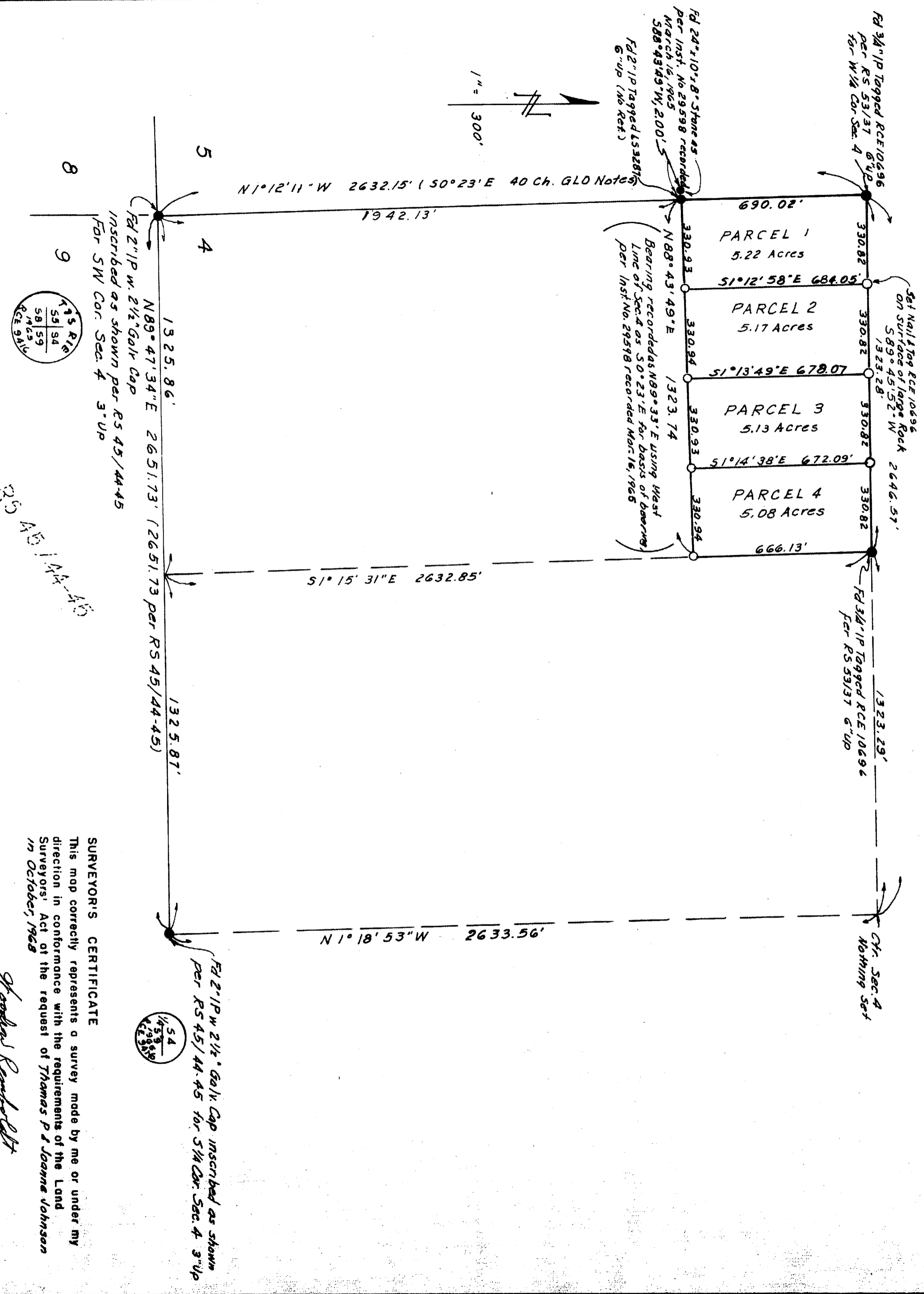
# RECORD OF SURVEY

IN THE COUNTY OF RIVERSIDE  
 IN THE SW 1/4 OF SECTION 4, T75, R1E, S8B1M  
 WOODROW REMBOLD LOT  
 OCTOBER 1968

RECORDER'S CERTIFICATE  
 Filed this 20 day of Dec, 1968 at 1:30 p.m.  
 in book 53 of Record of Surveys at page 40  
 at the request of the County Surveyor

W. D. BALOGH  
 County Recorder  
 FEE \$ 5.00 By Deputy  
 NO. 124200 Deputy

RS 53/37



**SURVEYOR'S CERTIFICATE**  
 This map correctly represents a survey made by me or under my direction in conformance with the requirements of the Land Surveyors' Act of the request of Thomas P. Joanne Johnson in October, 1968

*Thomas P. Joanne Johnson*  
 RCE 10696

**SURVEYOR'S NOTE**  
 O Set 3/4" I.P. Tagged RCE 10696 6" UP, unless otherwise noted  
 Found monument as noted  
 Basis of Bearings: The south line of Section 4, T75, R1E, S8B1M taken as N89°47'34" E per RS 45/44-45, Riv. Co. Records

**COUNTY SURVEYOR'S CERTIFICATE**  
 This map has been examined for conformance with the requirements of the Land Surveyors' Act this 20 day of December, 1968.

A.C. KEITH  
 County Surveyor  
 By *[Signature]*  
 Deputy