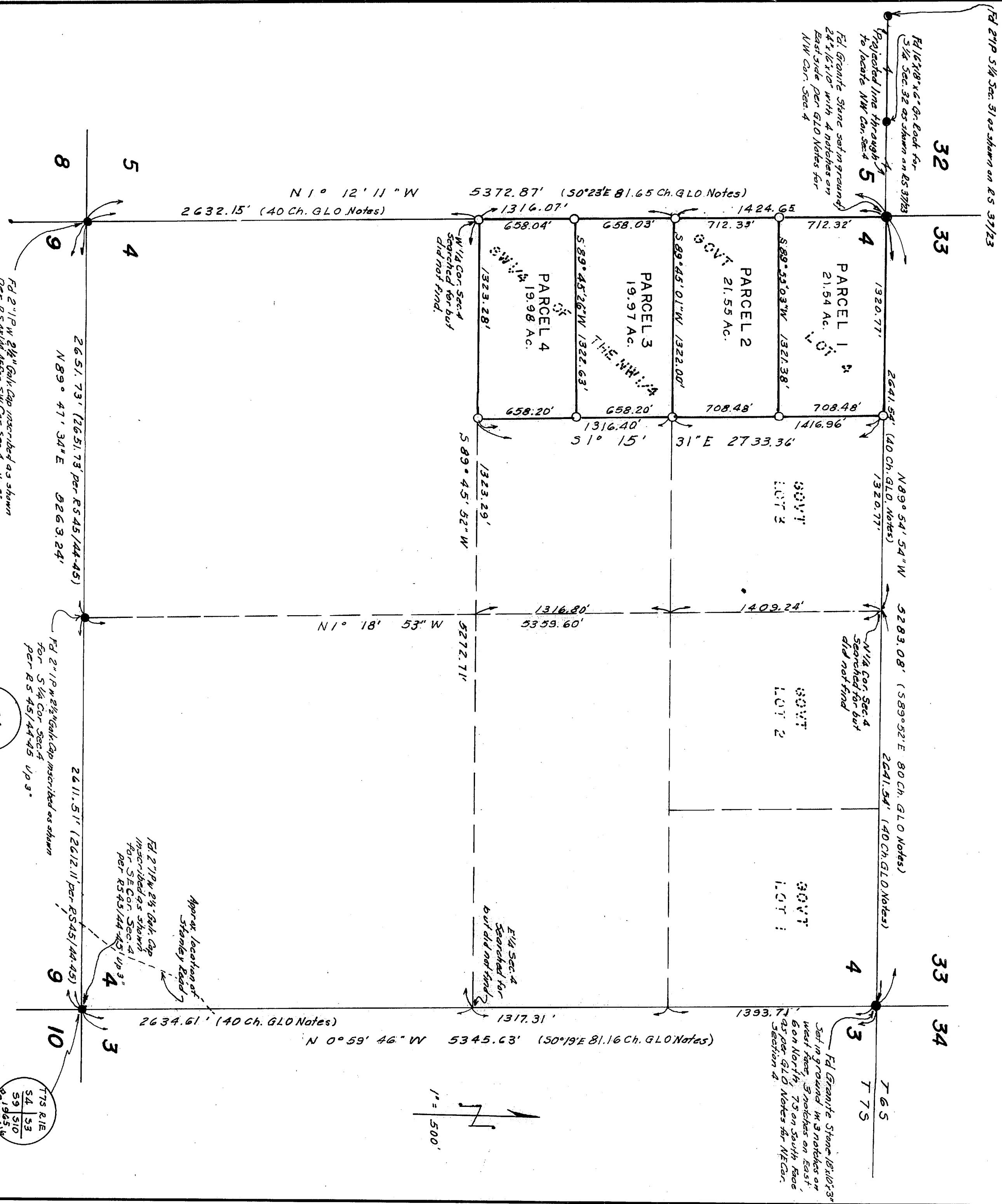


RECORD OF SURVEY

IN THE COUNTY OF RIVERSIDE
 OF GOV'T LOT 4, THE SW 1/4 OF THE NW 1/4 OF SEC. 4, T7S, R1E, S.B.B.A.M.
 OCTOBER 1968
 WOODROW REMBOLDT

RECORDER'S CERTIFICATE
 Filed this 3 day of Dec. 1968 at 12:30 p.m.
 In book 53 of Record of Surveys at page 37
 on the request of the County Surveyor

W. D. BALOGH
 County Recorder
 BY Deane Blalock
 Deputy



R 3 45 / 44-45

773 R1E
 S 51 15 4
 R 29 45 W

1/4 S 4
 S 9
 R 29 45 W

775 R1E
 S 4 15 3
 S 9 15 0
 R 29 45 W

SURVEYOR'S CERTIFICATE

This map correctly represents a survey made by me or under my direction in conformance with the requirements of the Land Surveyors' Act at the request of Virginia E. Galland in Sept. 1968

Woodrow Remboldt
 RCE 10696

SURVEYOR'S NOTE

Set 3/4" I.P. Tagged RCE 10696 up 6"
 Found Monument as noted
 Basis of bearings: The south line of Section 4, T7S, R1E, S.B.B.A.M. Taken as N89°47'34"E as per RS 45/44-45 Rv. Co. Records

COUNTY SURVEYOR'S CERTIFICATE

This map has been examined for conformance with the requirements of the Land Surveyors' Act this 2 day of December, 1968.

A.C. KEITH
 County Surveyor
 BY Deane Blalock
 Deputy